

# User Guide

*DiaLog-Driver Installation*

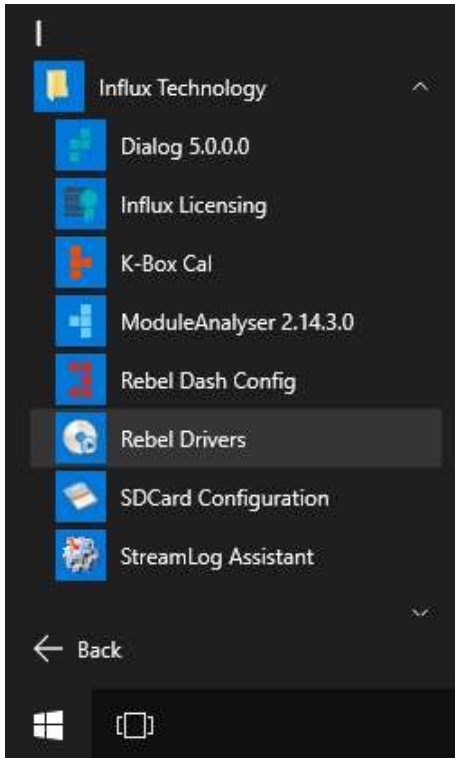


**Influx**  
DIALOG

## Rebel Drivers Installation (Windows Vista, 7, 8, 8.1 and 10)

Once DiaLog has been successfully installed, the Rebel drivers must be correctly installed to ensure the Rebel functions correctly.

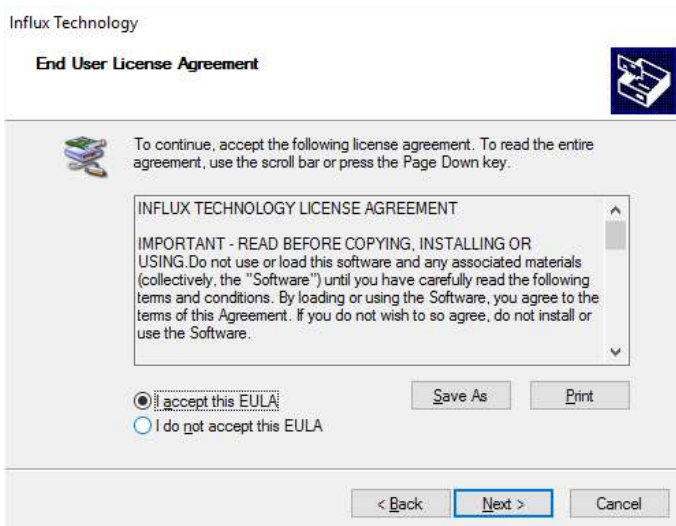
DiaLog installation automatically contains a driver installation application, which can be found in the Influx Technology folder of the Start Menu as shown below.



Ensure the Rebel is not plugged in and click 'Next' to continue.



Please read and accept the EULA, then click next to continue.



The driver installation will begin and may take a few moments. Once the installation is complete, click 'Finish' to close the application.



Plug in the Rebel to allow the drivers to be recognised.

## **Influx Technology Headquarters, UK**

Office Suite 22,  
Building 03 Millbrook Proving Ground,  
Station Lane Millbrook  
Bedford  
MK45 2JQ

Telephone: +44 (0) 1525 842504  
Sales: [sales@influxtechnology.com](mailto:sales@influxtechnology.com)

## **Influx Big Data Solutions Pvt Ltd, India**

#2,  
Krishvi,  
Ground Floor,  
Old Airport Road,  
Domlur,  
Bangalore,  
560071

Phone: +91 7337748490  
Sales: [sales\\_india@influxtechnology.com](mailto:sales_india@influxtechnology.com)

## **Influx Technology Asia, China**

Rm.722,  
Flr.7,  
Lisheng Tower,  
Wangfujing Street 201,  
Dongcheng District,  
Beijing,  
100005,  
China

Telephone: 86-10-5718-1640  
Email: [info@influxasia.com](mailto:info@influxasia.com)