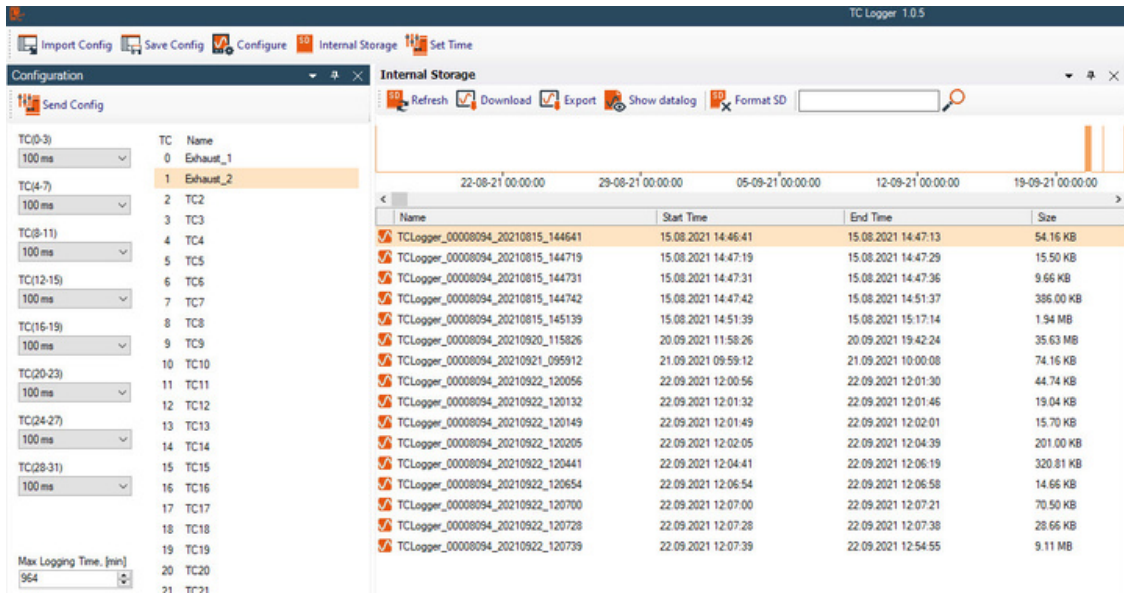


User Guide

K-TC-Logger Manual





ABOUT THIS MANUAL

This document provides a brief idea of the operation of the Influx K_TCxx loggers. This document is intended for professional engineers and academic researchers, allowing them to understand the concept of operating the device and integrate this knowledge into systems with components of other manufacturers.

DISCLAIMER

Translation of the original K_TC: User Manual & Quick Start Guide.

Version	Date	Remarks
1.0	17-01-2021	Initial Version
2.0	22-09-2021	Updated to match the improvements

Table 1: Version Details

COPYRIGHT & LICENSE AGREEMENT

The content of this document, including all brands and trademarks and possibly protected by third-party rights, is subject without limitation to the terms of their respective registered owner's valid trademark law and intellectual property rights.

© 2021 INFLUX TECHNOLOGY. All rights reserved.

SUPPORT

If you have a problem that you cannot resolve on your own, feel free to contact us for assistance at support@influxtechnology.com

CONTACT ADDRESS

Influx Technology Ltd

Office 22, Building 03, Millbrook Proving Ground

Bedford, MK45 2JQ, United Kingdom

Telephone: +44 (0) 1525 842504,

Sales: sales@influxtechnology.com

Support: support@influxtechnology.com

www.influxtechnology.com



Table of Contents

ABOUT THIS MANUAL.....2

DISCLAIMER.....2

COPYRIGHT & LICENSE AGREEMENT2

1 Introduction4

2 Getting Started.....4

 2.1 Connector PIN Details.....4

 2.2 Software Installation5

 2.3 Driver Installation7

3 Software Introduction8

 3.1 Graphical Overview8

 3.2 Navigation Bar.....8

 3.3 Status Bar9

 3.4 Configuration Panel9

 3.5 Max Log Time (min)10

 3.6 Internal Storage Window.....10

 3.7 Show Data Log Window.....11

4 Quick Start Guide12

 4.1 Preparation of configuration12

 4.2 Setting up Max log time.....13

 4.3 Retrieving the Datalog.....13



1 Introduction

The K-TC is Influx's stackable instrumentation that is compatible with the Rebel range of data loggers. It can also be integrated with any device configured via DBC files, even other logger systems or output signals on CAN to the Rebel Dash display.

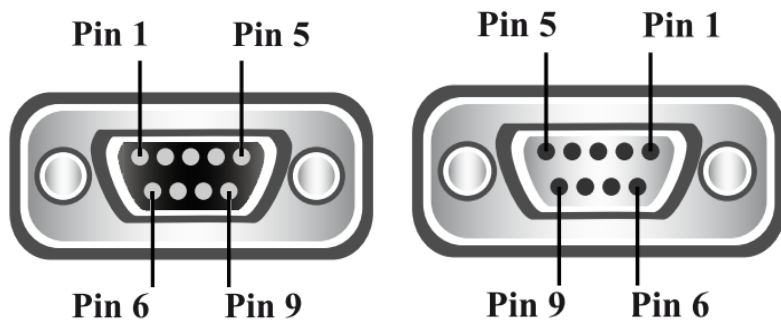
The K-TC is an ideal solution for applications that require a large number of thermocouple inputs. The K-TC's accurate sensor data is transmitted periodically on the CAN bus, enabling multiple devices to be connected. In addition, The temperature data is simultaneously logged in the inbuilt micro SD card, the K-TC CAN bus settings, calibration and sampling rates are all easily configurable, and these settings are stored within the K-TC even when the device is not powered.



2 Getting Started

2.1 Connector PIN Details

The Connector is a male and female 9-pin Standard D Type connector.



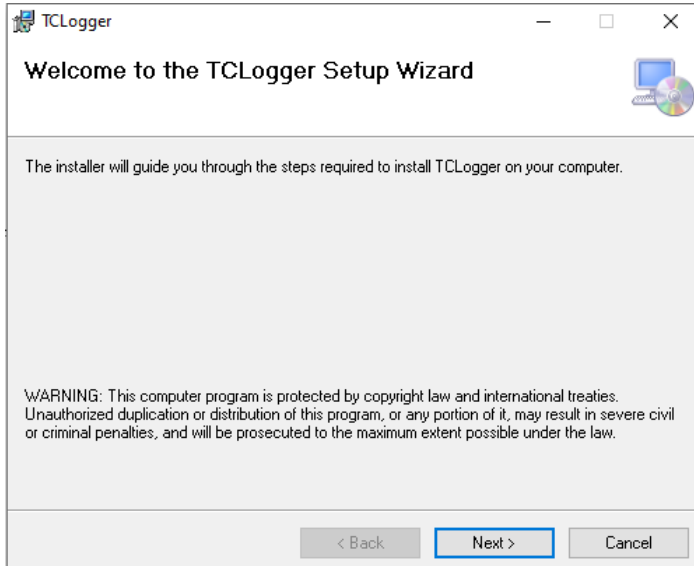
PIN Detials

Pin No	Pin Function
Pin 1	NC
Pin 2	CAN - Low
Pin 3	GND
Pin 4	NC
Pin 5	Power GND
Pin 6	NC
Pin 7	CAN - High
Pin 8	NC
Pin 9	Power Supply 5 – 31V

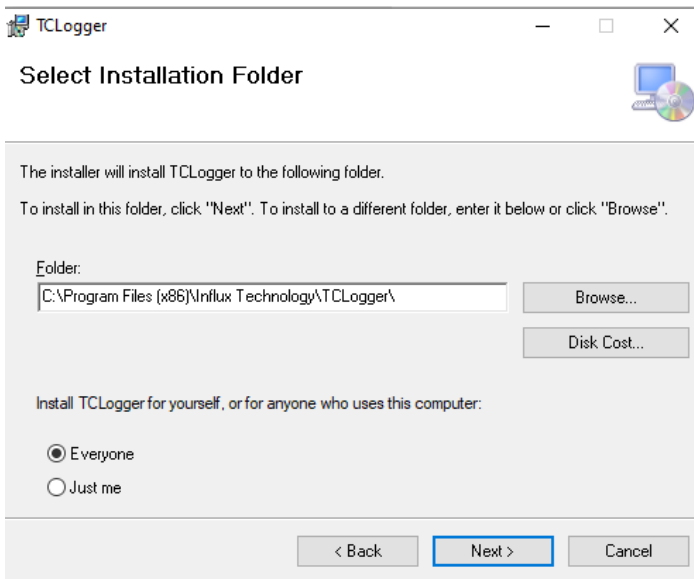


2.2 Software Installation

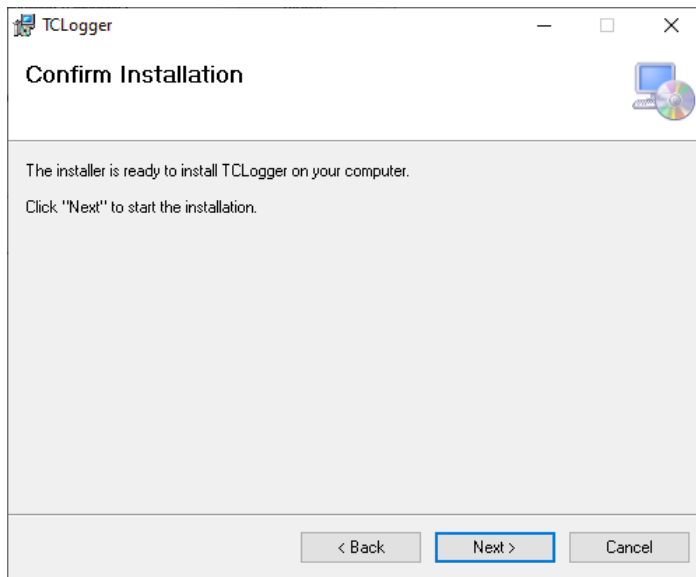
To begin with, installing the TC logger software, open the installer by running the set-up file.



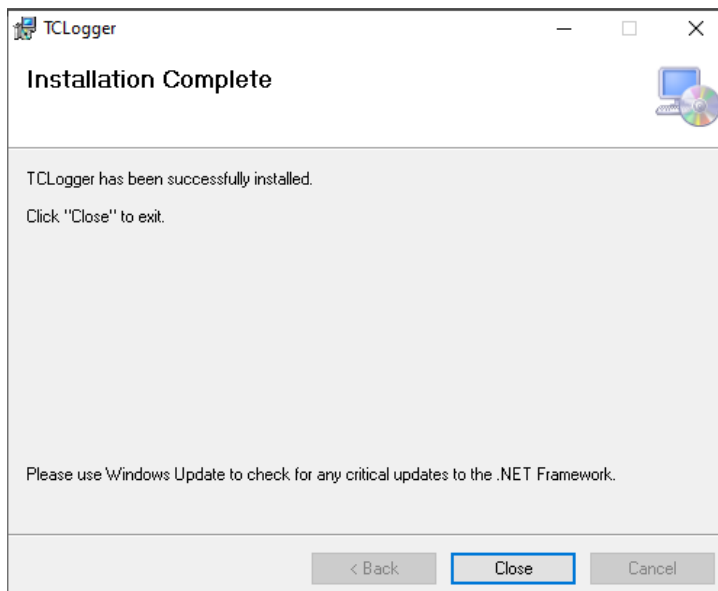
- To continue with the installation of the TC logger on your system, click 'Next'.
- To cancel the installation at this stage, click 'Cancel'. (No software will have been installed on the system at this point.)



- Select the folder in which you wish to install the software; it's preferred to use the default location.
- Select the preference for computer user installation to determine which computer users will access the ReXdesk software.
- Click 'Next' to continue with the installation.



- Click 'Next' to confirm the installation.



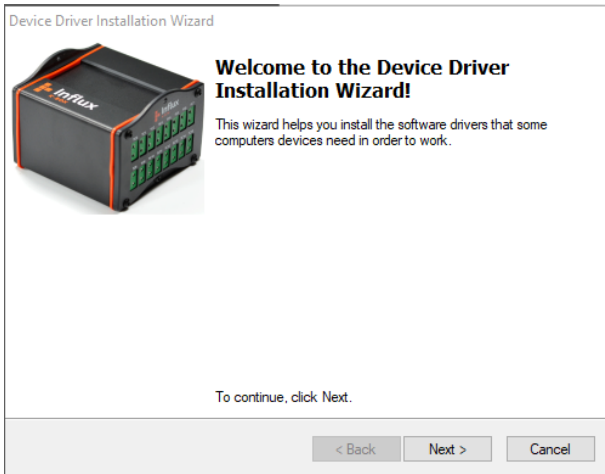
- Once the installation is complete, this window will appear.
- Click 'Close' to close the window. TC logger is now successfully installed on your system



2.3 Driver Installation

Before proceeding with the installation, please ensure that you have acquired administrative privileges.

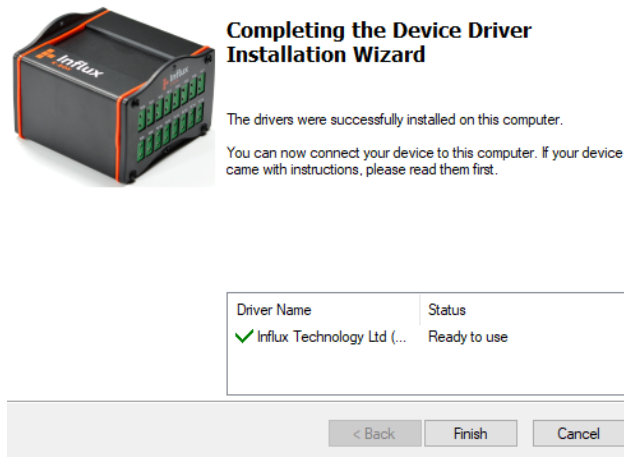
www.influx.com/techsupport/faq



Run the **TCXX** **TCXX**

- To continue installing the TC logger device driver on your system click, 'Next'.
- To cancel the installation at this stage, click 'Cancel'. (No software will have been installed on the system at this point.)

Device Driver Installation Wizard



- Once the installation is complete, this window will appear.
- Click 'Finish' to close the window. TCXX driver is now successfully installed on your system.



3 Software Introduction

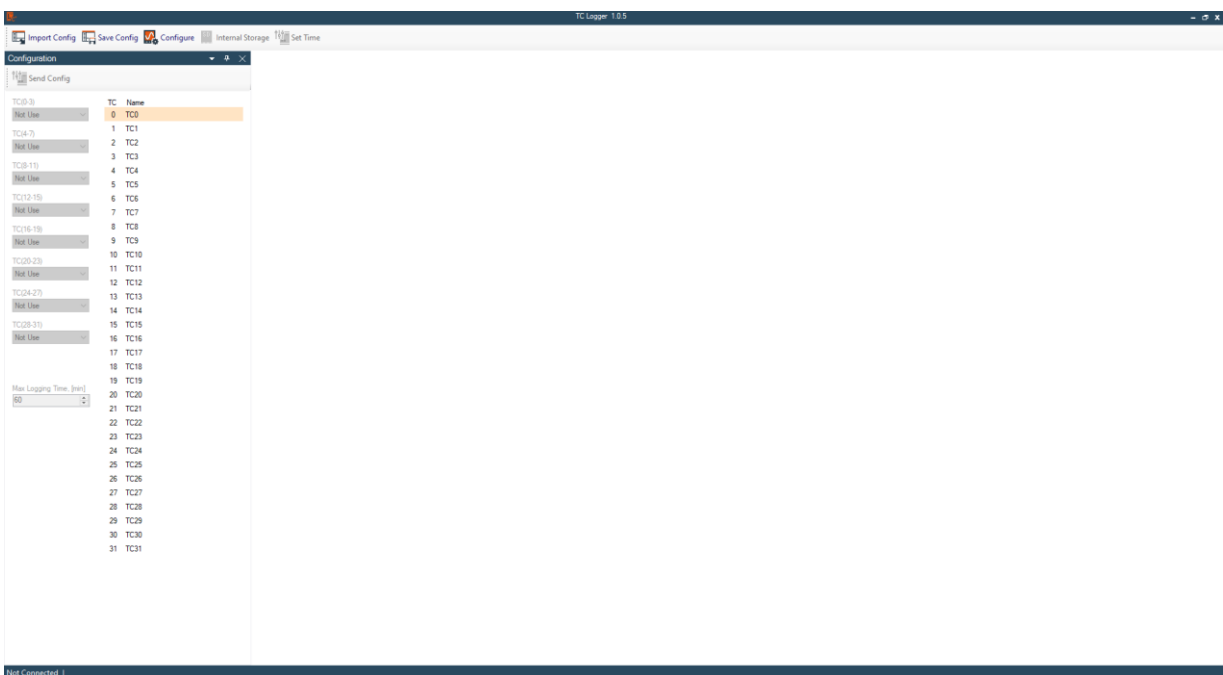
3.1 Graphical Overview

TC Logger software is accessed using either the desktop icon:



Or the 'Start Menu' directory—"Influx Technology".


Once started, the user is presented with the following opening screen:





3.2 Navigation Bar





The 'Navigation Bar' is situated at the top of the software screen and can navigate most program features. Some of the menus will be active only when the logger is interfaced.

-  **Import Config**

Allows the user to import the saved TC settings file.
-  **Save Config**

Allows the user to save the working project (Projects are saved in .xml format).
-  **Configure**

Allows the user to update the settings to the logger.
-  **Internal Storage**

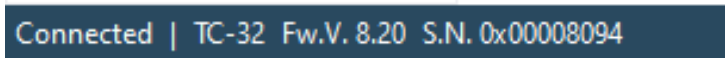
Allow user to View internal storage.
-  **Set Time**

Allows the user to Set the Time of the TC device.



3.3 Status Bar

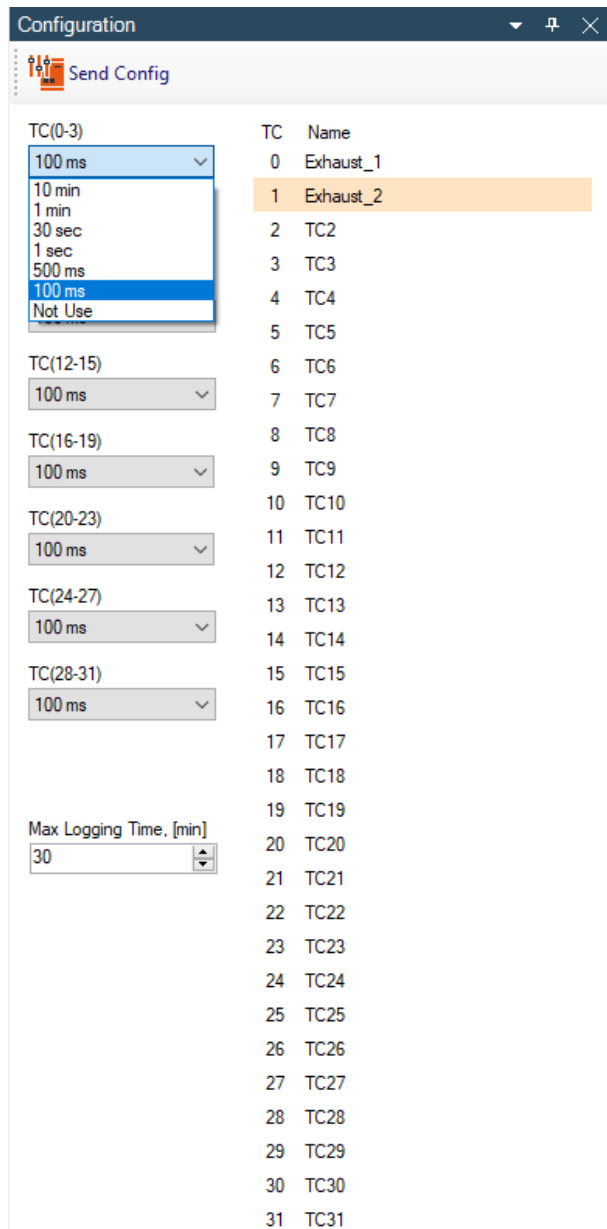
The 'Status Bar' is used to display key pieces of information regarding the TC logger.



- Logger Status** – Indicates the connection status of the TC logger.
- TC model info** – Displays the TC series of the device connected.
- Firmware info** – Displays the current firmware info of the device connected.
- Logger serial number** – Displays the serial number of connected TC logger.

3.4 Configuration Panel

The configuration panel comprises the available TC channels with respect to the device connected and the sampling rates for each Channel in the corresponding dropbox.



User can also specify the names for each channels, these names will be used by the TC Logger software during the export of data.

The channel names and the rates will be saved with the configuration in xml format.

User can import the configuration before exporting the data so that the data exported will have the labels specified by the user.



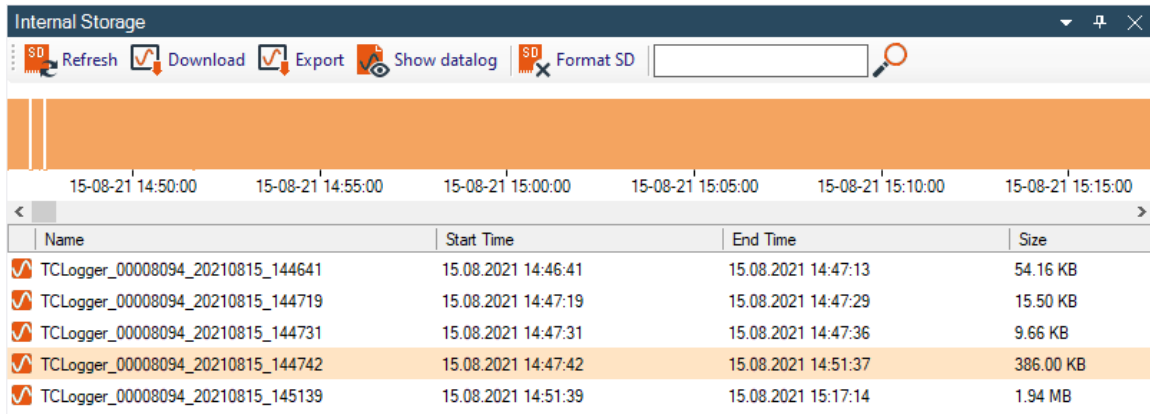
3.5 Max Log Time (min)

Max Logging Time, [min]

Max Logging Time – Allows the user to specify Max Log Duration for a data log.

3.6 Internal Storage Window

The Internal storage panel displays all the files currently stored on the TC Logger memory.

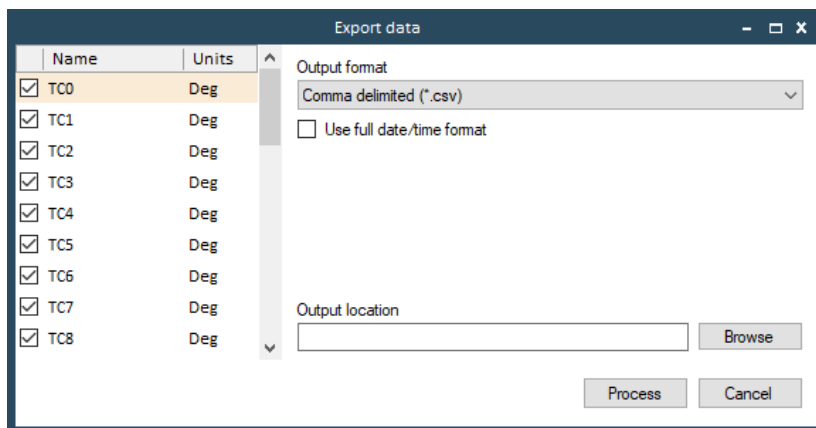


Available Menu actions



- **Refresh** – Allows the user to refresh the window.
- **Download** – Allows the user to retrieve log files from the TC logger memory.
- **Export** – Allows the user to export the RAW data to various other export formats.
- **Show data log** – Allows to view and then export the selected log data.
- **Format SD** – Allows the user to format the internal memory of the datalogger.
- **Find** – Allows the user to search for log files.

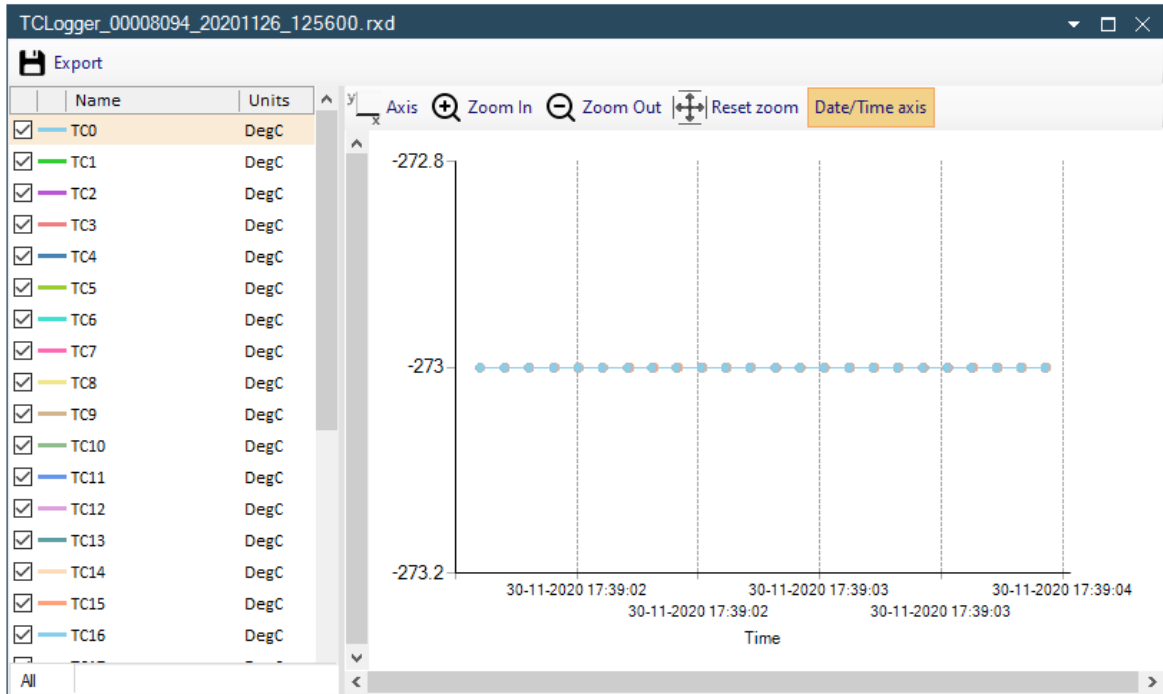
Export Window





This window allows the user to select an individual Channel required for exporting, select the Export format, Export options and Output Location. Enabling "Use full date/time format" allows user to export data with actual time stamp (dd:mm: yyyy: hh:mm: ss).

3.7 Show Data Log Window



The datalog window will display the logged temperature data in the oscilloscope.



4 Quick Start Guide

4.1 Preparation of configuration

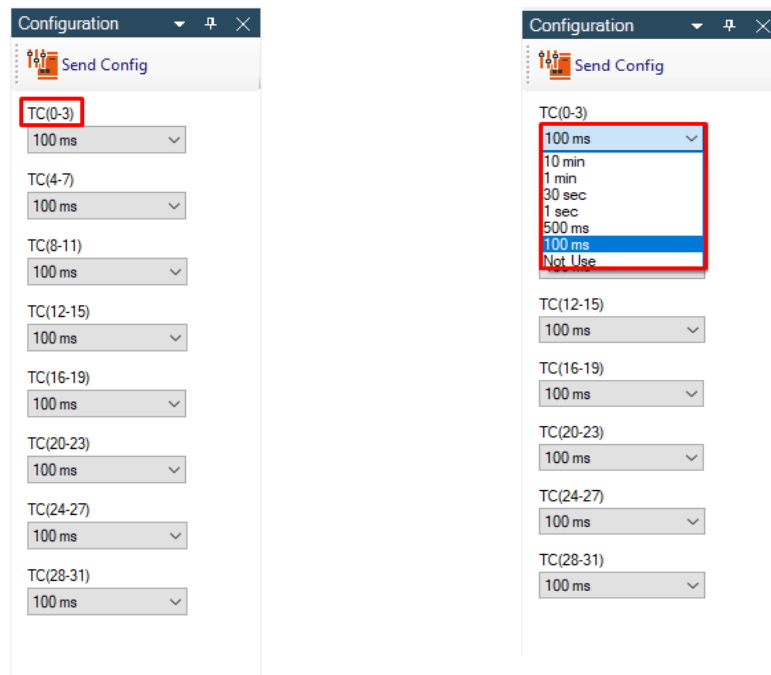
TC Logger allows the user to assign the temperature channels with different sampling rates.

Step 1

Open TC logger software, Interface TC logger with PC.

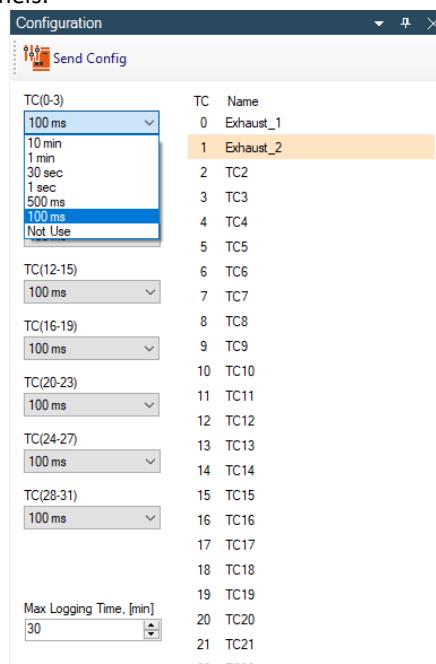
Step 2

Select sampling rate for each group of TC channels.



Step 3

Enter the names for each of the channels.





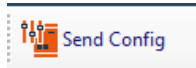
Step 4

Save the configuration to the PC, this XML will be used during exporting of data for assigning channel names.



Step 5

Click "send configuration" to update the configuration to the logger.



4.2 Setting up Max log time

Maximum log time for a single file can be entered in the max log time check box

Max Logging Time, [min]

Notes

- Max log time should be set while updating a new configuration

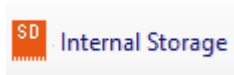
4.3 Retrieving the Datalog

Step 1

Connect the logger to the PC via USB.
 Status Bar will display the logger status and time information.

Step 2

Click on the "Internal Storage"

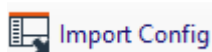


The below window will open up.

Name	Start Time	End Time	Size
✓ TCLogger_00008094_20201201_094843	01.12.2020 09:48:43	01.12.2020 09:53:43	987.16 KB
✓ TCLogger_00008094_20201201_095343	01.12.2020 09:53:43	01.12.2020 09:58:43	987.00 KB
✓ TCLogger_00008094_20201201_095843	01.12.2020 09:58:43	01.12.2020 10:03:43	987.00 KB
✓ TCLogger_00008094_20201201_100343	01.12.2020 10:03:43	01.12.2020 10:08:43	987.00 KB
✓ TCLogger_00008094_20201201_100843	01.12.2020 10:08:43	01.12.2020 10:13:43	984.66 KB
✓ TCLogger_00008094_20201201_101343	01.12.2020 10:13:43	01.12.2020 10:18:43	987.00 KB
✓ TCLogger_00008094_20201201_101843	01.12.2020 10:18:43	01.12.2020 10:23:43	987.00 KB
✓ TCLogger_00008094_20201201_102343	01.12.2020 10:23:43	01.12.2020 10:28:43	987.00 KB
✓ TCLogger_00008094_20201201_102843	01.12.2020 10:28:43	01.12.2020 10:33:43	986.16 KB

Step 3

Load the XML configuration which contain the channel names.



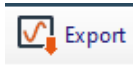


Step 4

The log files in the internal logger memory will be displayed. Select the files to be retrieved.

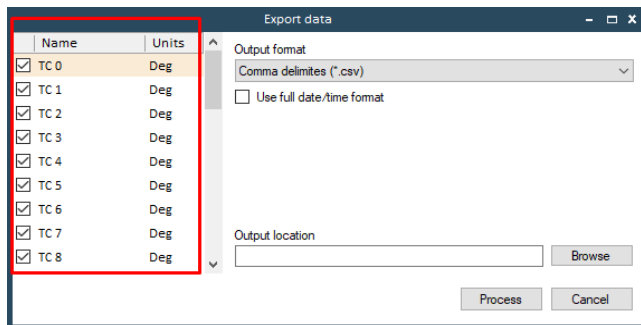
Step 5

Click Export.



Step 6

Select the TC channel required for exporting



Step 7

Select required output format



Notes

- Enabling "Use full date/time "allows user to export data in real time stamp "dd:mm: yyyy: hh:mm:ss"

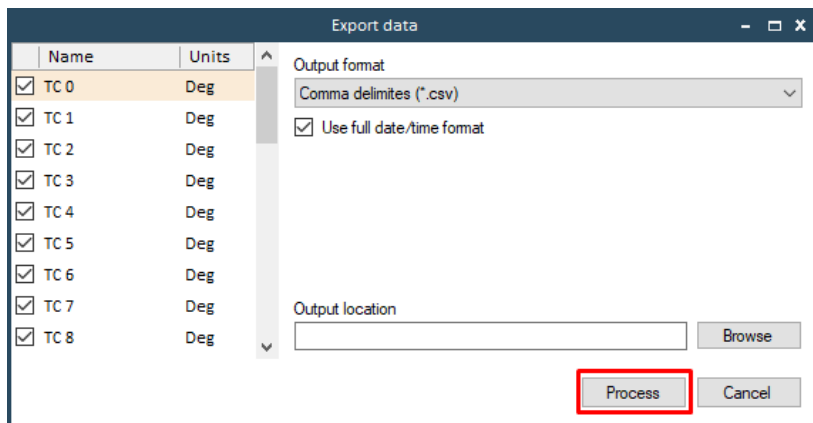
Step 8

Browse and choose a location to save the data



Step 9

Click process to export the file





Influx
TECHNOLOGY

Influx Technology Headquarters

Office Suite 22,
Building 03 Millbrook Proving Ground,
Station Lane Millbrook
Bedford
MK45 2JQ

Telephone: +44 (0) 1525 842504
Sales: sales@influxtechnology.com

Influx Big Data Solutions Pvt Ltd

#2,
Krishvi,
Ground Floor,
Old Airport Road,
Domlur,
Bangalore,
560071

Phone: +91 7337748490
Sales: sales_india@influxtechnology.com

Influx Technology Asia

Rm.722,
Flr.7,
Lisheng Tower,
Wangfujing Street 201,
Dongcheng District,
Beijing,
100005,
China

Telephone: 86-10-5718-1640
Email: info@influxasia.com



www.influxtechnology.com